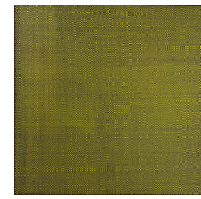
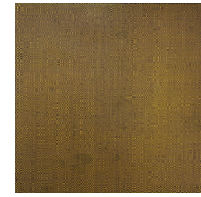


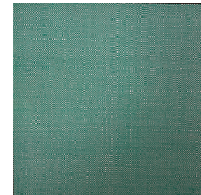
## GALLERY 2



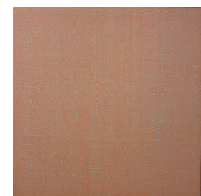
**Lezlie Tilley**  
*Dazzle I - Cool Yellow/Black (2021)*  
Acrylic on Canvas  
120 x 120 cm



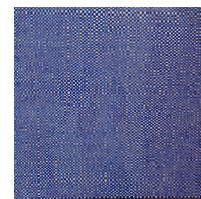
**Lezlie Tilley**  
*Dazzle II - Warm Yellow/Black (2021)*  
Acrylic on Canvas  
120 x 120 cm



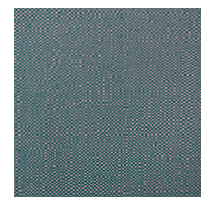
**Lezlie Tilley**  
*Dazzle III - Green/Pink (2021)*  
Acrylic on Canvas  
120 x 120 cm



**Lezlie Tilley**  
*Dazzle IV - Pink/Blue (2021)*  
Acrylic on Canvas  
120 x 120 cm



**Lezlie Tilley**  
*Dazzle V - Blue/Pink (2021)*  
Acrylic on Canvas  
50 x 50 cm



**Lezlie Tilley**  
*Dazzle VI - Green/Red (2021)*  
Acrylic on Canvas  
50 x 50 cm



**Sue Jones**  
*A Touch of Limoges + The Space Within*  
Ceramic (glazed)



**Sue Jones**  
*Kakadu Reflections*  
Ceramic (glazed)



**Sue Jones**  
*White Gold*  
Ceramic (glazed)



**Sue Jones**  
*Snowgums*  
Ceramic (glazed)



**Sue Jones**  
*Daubed Vessels*  
Ceramic (glazed)



**Sue Jones**  
*Uluru Teapot + Desert Colours + Larapinta Trail*  
Ceramic (glazed)



**Sue Jones**  
*Larapinta Trail + Scribbly Gums*  
Ceramic (glazed)



**Sue Jones**  
*Desert Colours*  
Ceramic (glazed)



**Sue Jones**  
*Snowgums*  
Ceramic (glazed)



**Sue Jones**  
*Untitled*  
Ceramic (glazed)



**Sue Jones**  
*Local Forest*  
Ceramic (glazed)



**Sue Jones**  
*Untitled*  
Ceramic (glazed)

## GALLERY 3



**Brett Piva**  
*A Brush along The Bidgee (2021)*  
Natural materials, various



**Maddyson Hatton**  
*Mechanical obverse (The observed faces the machine)*  
Southern ice porcelain, digital print of blind drawing



**Brett Piva**  
*The Rivers Red*  
23 Karat Gold, 22 Karat Moon Gold, 12 Karat White Gold, Enamel and Acrylic on Glass  
120cm x 90cm

## CABINET



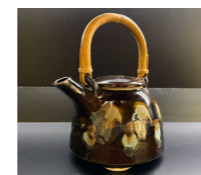
**Sue Jones**  
*Drought*  
Ceramic (glazed)



**Sue Jones**  
*Untitled*  
Ceramic (glazed)



**Sue Jones**  
*Untitled*  
Ceramic (glazed)



**Sue Jones**  
*Untitled*  
Ceramic (glazed)

### Artwork for sale

Please note that all work in the cabinet and by Lezlie Tilley are for sale. Please contact staff for more information.

### Acknowledgement

Chris Capper is represented by Damien Minton

# ORDINARY INTRICACIES



UNIVERSITY  
GALLERIES



IMAGE: JOHN HEANEY  
*Kimono (detail)*  
Ceramic (unglazed)  
Image courtesy of the artist

**WATT SPACE GALLERY**  
Northumberland House, cnr King and Wickham St,  
Newcastle NSW 2300

**OPENING HOURS**  
Wed - Fri 11am - 5pm  
Sat - 12 - 4pm or by appointment

Due to COVID-19 restrictions, all visits are currently by appointment only

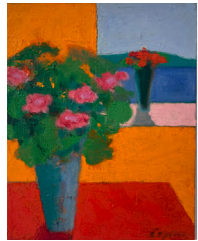
**CONTACT**  
e [wattspacegallery@newcastle.edu.au](mailto:wattspacegallery@newcastle.edu.au)  
w [www.newcastle.edu.au/wattspacegallery](http://www.newcastle.edu.au/wattspacegallery)  
t +61 7 4921 8733 or +61 7 5255

# ORDINARY INTRICACIES

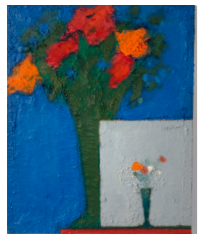
## GALLERY 1



**Chris Capper  
Untitled**  
51 x 61cm  
Oil on canvas



**Chris Capper  
Homage to  
Adrian Faint #2**  
61 x 51cm  
Oil on canvas



**Chris Capper  
A Vase of Plenty  
- Sri Lanka**  
61 x 51cm  
Oil on canvas



**Chris Capper  
Kitchen Window**  
51 x 61cm  
Oil on canvas



**Chris Capper  
Two Pineapples  
on the Kitchen  
Window**  
51 x 61cm  
Oil on canvas

## WINDOW BOX



**Chris Capper  
Homage to Max  
Watters #3**  
51 x 61cm  
Oil on canvas



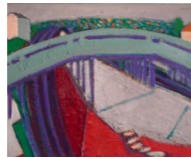
**Chris Capper  
Homage to Max  
Watters #2**  
51 x 61cm  
Oil on canvas



**Drawing by Max  
Watters, 1966**  
Gift to the artist

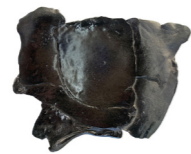


**Chris Capper  
Homage to Max  
Watters #1**  
51 x 61cm  
Oil on canvas



**Chris Capper  
The Suicide  
Bridge, Maud St  
Mayfield**  
51 x 61cm  
Oil on canvas

## GALLERY 1 CONT.



**John Heaney  
In a galaxy far  
far away**  
Stoneware (blue  
and black glaze)



**John Heaney  
Downwards into  
darkness on  
extended wings**  
Stoneware (matte  
black glaze)



**John Heaney  
Downwards into  
darkness on  
extended wings II**  
Stoneware (matte  
black glaze)



**John Heaney  
Untitled**  
Stoneware (matte  
black glaze)



**John Heaney  
Downwards into  
darkness on  
extended wings III**  
Stoneware (matte  
black glaze)



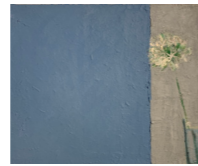
**John Heaney  
Drover's Wife**  
Stoneware  
(unglazed)



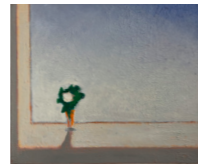
**Chris Capper  
Carnations**  
51 x 61cm  
Oil on canvas



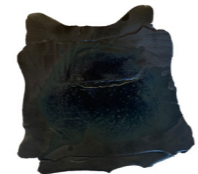
**Chris Capper  
Table**  
51 x 61cm  
Oil on canvas



**Chris Capper  
White Agapantha,  
Upstairs Window**  
51 x 61cm  
Oil on canvas



**Chris Capper  
Window**  
51 x 61cm  
Oil on canvas



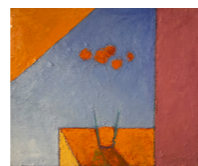
**John Heaney  
Stardust I**  
Stoneware (matte  
black glaze)



**Chris Capper  
Five Red  
Flowers - small**  
51 x 61cm  
Oil on canvas



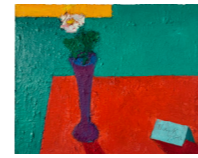
**Chris Capper  
Three flowers  
taken from a 1920s  
piece of french  
embroidery**  
51 x 61cm  
Oil on canvas



**Chris Capper  
Untitled**  
51 x 61cm  
Oil on canvas



**Chris Capper  
Vase and Sky**  
51 x 61cm  
Oil on canvas



**Chris Capper  
Thank you**  
51 x 61cm  
Oil on canvas



**Chris Capper  
Carnation**  
51 x 61cm  
Oil on canvas



**Chris Capper  
Keeping On  
Track**  
51 x 61cm  
Oil on canvas



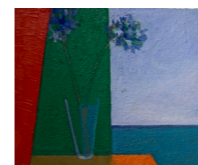
**Chris Capper  
Untitled -  
Newcastle**  
51 x 61cm  
Oil on canvas



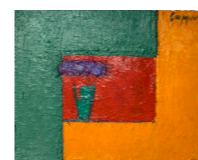
**Chris Capper  
Homage to  
Adrian Faint #1**  
61 x 51cm  
Oil on canvas



**Chris Capper  
Agapanthas #1**  
51 x 61cm  
Oil on canvas



**Chris Capper  
Agapanthas #2**  
51 x 61cm  
Oil on canvas



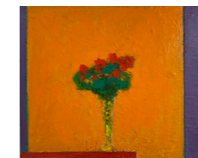
**Chris Capper  
Five Purple  
Carnations**  
51 x 61cm  
Oil on canvas



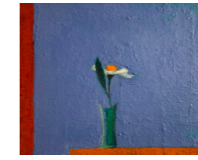
**Chris Capper  
Untitled**  
51 x 61cm  
Oil on canvas



**Chris Capper  
Untitled**  
51 x 61cm  
Oil on canvas



**Chris Capper  
Untitled**  
51 x 61cm  
Oil on canvas



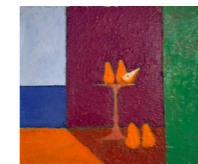
**Chris Capper  
Gordonia**  
51 x 61cm  
Oil on canvas



**Chris Capper  
Untitled**  
51 x 61cm  
Oil on canvas



**Chris Capper  
2 1/2 Pears**  
51 x 61cm  
Oil on canvas



**Chris Capper  
4 1/2 Pears**  
51 x 61cm  
Oil on canvas



**Chris Capper  
2 1/2 Pears -  
small**  
51 x 61cm  
Oil on canvas



**Chris Capper  
Wattle in a time  
of plague  
(2020-2021)**  
40.6 x 50.8cm  
Oil on canvas board



**Ari Chand  
Juxstarepository I**  
Graphite on  
watercolour paper  
57 x 76.5cm



**Ari Chand  
Juxstarepository II**  
Graphite on  
watercolour paper  
57 x 76.5cm



**Ari Chand  
Juxstarepository III**  
Graphite on  
watercolour paper  
57 x 76.5cm



**Ari Chand  
Juxstarepository IV**  
Graphite on  
watercolour paper  
57 x 76.5cm



**Ari Chand  
Juxstarepository V**  
Graphite on  
watercolour paper  
57 x 76.5cm

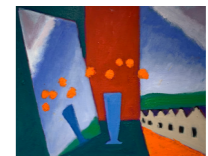


**Ari Chand  
Juxstarepository VI**  
Graphite on  
watercolour paper  
57 x 76.5cm



**Mojgan Habibi  
General Assembly  
Resolution 217A**  
Ceramic (glazed)  
and graphite

## GALLERY 4



**Chris Capper  
The Mirror, Asher  
St Georgetown**  
51 x 61cm  
Oil on canvas



**Chris Capper  
Jonquils**  
41 x 51cm  
Oil on canvas



**Chris Capper  
Drinks with Peter  
- Tamarama**  
40 x 50.5cm  
Oil on canvas

## MEDIA ROOM