



**John Barnes**  
*Towards the Source*  
2009  
oil on paper  
55 x 75cm

*Reconnection* continues until 26 March

THE UNIVERSITY  
**GALLERY**

**THE UNIVERSITY GALLERY**

The University of Newcastle, Callaghan 2308

E [gallery@newcastle.edu.au](mailto:gallery@newcastle.edu.au)

W [www.newcastle.edu.au/service/university-gallery](http://www.newcastle.edu.au/service/university-gallery)

T 02 4921 5255

F 02 4921 6909

**OPEN** Wednesday – Saturday  
12 noon – 6pm or by appointment

**John Barnes**

**Reconnection** - an exploration of Australian  
landscape beyond history and myth



THE UNIVERSITY OF  
**NEWCASTLE**  
AUSTRALIA



POSTGRADUATE EXHIBITION  
**9 - 26 MARCH 2011**

THE UNIVERSITY  
**GALLERY**





**John Barnes**  
*Meeting Place*  
2008  
acrylic on plywood  
60 x 74cm

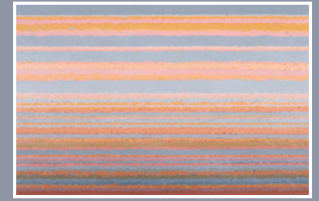
“  
Can the materials and processes of landscape-focused studio research, structured on an experiential foundation, act as a portal of connection with nature for an arguably disconnected humanity? ”

The land is the constant point of reference in *Reconnection - an exploration of Australian landscape beyond history and myth*. In its various manifestations, from the representational to abstract, the land acts as the point of possible reconnection between nature and a dislocated humanity driving the planet toward a post-human future.

These paintings engage with the expression of landscape in non-indigenous Australian art since British colonisation. They are reflexive responses to experience, reinforced by the historic, social, cultural and personal stories that have played a major part in the development of my values and my art.

I grew up on the shores of post-WWII Sydney Harbour and spent my early adulthood in the city. During these times I had close contact with rural Australia, but in the mid-1970s I moved to the family property at Binalong in southern NSW where I lived and worked for the next twenty-five years. In 2000 I relocated to Newcastle and it is from this vantage point that these works have developed.

*John Barnes*



ABOVE  
**John Barnes**  
*Lost Horizon*  
2009  
acrylic on plywood  
80 x 120cm

BELOW  
**John Barnes**  
*Sanctuary*  
2009  
oil on canvas  
46 x 61cm

COVER IMAGE  
**John Barnes**  
*The Gap*  
2010  
oil on plywood  
120 x 150cm

## Reconnection

- an exploration of  
Australian landscape  
beyond history and myth

