



**ABOVE**  
**Annemarie Murland**  
*Weaving Paint v Texture*  
 2011  
 oil on belgian linen  
 60 x 60cm

**COVER**  
**Annemarie Murland**  
*Weaving Paint, Continuous Line - Cool Veil (detail)*  
 2011  
 oil on canvas  
 90 x 70 x 8cm

*Structure Becomes Image* continues until 15 October

**THE UNIVERSITY**  
**GALLERY**

**THE UNIVERSITY OF NEWCASTLE** CALLAGHAN 2308

E [gallery@newcastle.edu.au](mailto:gallery@newcastle.edu.au)  
 W [www.newcastle.edu.au/universitygallery](http://www.newcastle.edu.au/universitygallery)  
 T + 61 02 4921 5255  
 OPEN Wednesday – Saturday 12 noon – 6pm or by appointment



# Annemarie Murland

**STRUCTURE BECOMES IMAGE**

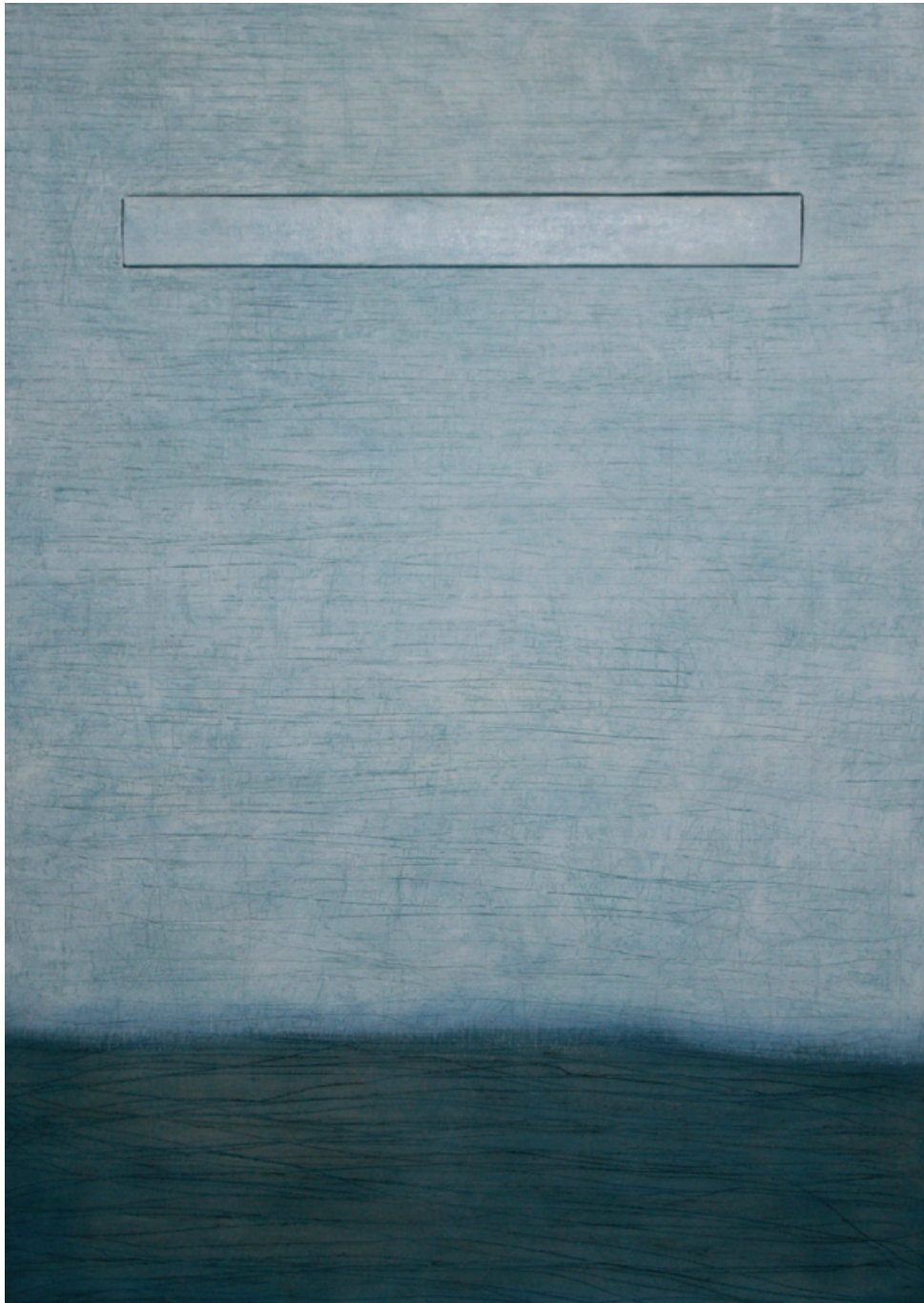


THE UNIVERSITY OF  
**NEWCASTLE**  
 AUSTRALIA



Exhibition Dates **28 SEPTEMBER -15 OCTOBER 2011**

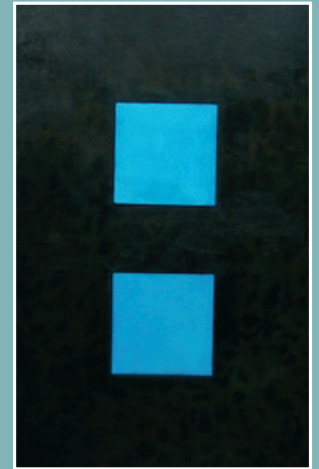
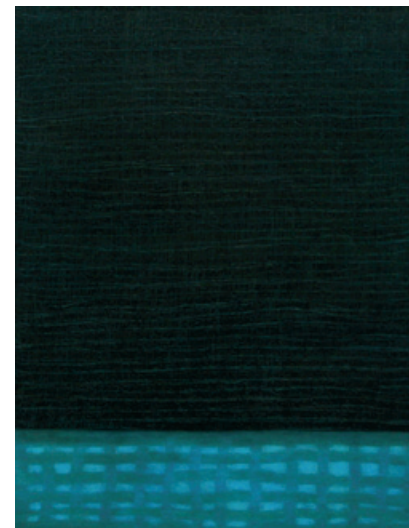
**THE UNIVERSITY**  
**GALLERY**



My works of art and studio practice negotiate the possibilities of articulating the aesthetic potential of 'embodied' experience as an interior and exterior spatial concept. As a practicing artist, my work navigates its subject matter to illustrate the physical and material characteristics of medium and materials in order to affect a bodily response. The picture plane and its support, the lens of the camera, and poetic notations are vehicles that demonstrate an empirical approach to representation. I am aware of the significant role of process in the conceptual development of an artworks' genesis, particularly when chance fuses with the material characteristics of the medium; it is at this juncture where the potential for new visual conversations come into play. The drama of this creativity reflects the artist at work, reconstructing representation.

Migration, place and felt experience embody my approach. The physical experience of migration and a memory of place relocates visually onto the picture plane to redefine felt experience through material investigation. It is my experience that the body as a site of creativity, is at the crux of practice, one that infuses a sense of well-being, and one which becomes an evolving metaphor in my work. The phenomenon of felt experience, although difficult to quantify within traditional spheres of knowledge production, finds expression, through the actions of the brush, the marks on paper and the textual responses. Describing place resolutely locates individual experience as a justifiable source of artistic production.

Annemarie Murland



ABOVE

**Annemarie Murland**  
*Gesture v Colour*  
2011  
oil on canvas on board  
140 x 100 x 15cm

BOTTOM LEFT

**Annemarie Murland**  
*Multiple Weave (Micro v Macro)*  
2011  
oil on canvas  
90 x 70 x 8cm

OPPOSITE

**Annemarie Murland**  
*Sgraffito: Cool Veil*  
2011  
oil on canvas on board  
140 x 100 x 10cm

**Annemarie  
Murland**

STRUCTURE BECOMES IMAGE